

Forme ampie e accoglienti, design elegante e discreto. È la nuova dimensione di Catifa: due proposte ideali nelle situazioni lounge o nelle sale d'attesa, ma utilizzabili anche nelle più diverse situazioni domestiche, con la versatilità tipica di questo sistema di sedute.

Ample, welcoming shapes and an elegant, discreet design add a new dimension to Catifa. Two solutions that are the ideal complement to lounge or waiting room environments. But Catifa can also be used in any and every domestic setting, such is the versatility that is a hallmark of this seating system.

Großzügige, bequeme Formen. Elegantes, zurückhaltendes Design. Das ist die neue Catifa-Dimension: zwei ideale Anregungen für den Lounge- oder Wartebereich, wenngleich sich dieses Stuhlsystem aufgrund seiner typischen Vielseitigkeit auch für ganz unterschiedliche Wohnsituationen eignet.

Des formes amples, accueillantes, un design élégant et discret. La nouvelle dimension de Catifa, deux propositions idéales pour des espaces lounge ou salles d'attente mais qui s'adaptent bien aux espaces maison, avec une multitude d'utilisations originales pour ce type d'assises.



catifa 70/80
design Lievore, Altherr, Molina, 2006

Catifa 80
poltrona/chair code 2010
tessuto/fabric Action Fabric 003





Catifa 70

poltrona/chair code 2007

poggiapiedi/footrest code 2008

tessuto/fabric Divina melange 721

Catifa 70

poltrona/chair code 2011

poggiapiedi/footrest code 2012

pelle fiore/soft leather PF005



Catifa 80
poltrona/chair code 2009
tessuto/fabric Action Fabric 001





Catifa 70
Lievore, Altherr, Molina

type
poltrona lounge+poggiapiedi
lounge chair+footrest
Loungesessel+Fußstütze
fauteuil lounge+tabouret

code
2012+2011

Pelle fiore/Soft leather
PF005



product
design
award

2007 ■



Catifa 80
Lievore, Altherr, Molina

type
poltrona
chair
Stuhl
chaise

code
2010

Pelle fiore/Soft leather
PF006



product
design
award

2007 ■



Catifa 70
Lievore, Altherr, Molina

type
poltrona lounge
lounge chair
Loungesessel
fauteuil lounge

code
2007

Tessuto/Fabric
B Flora 2 586



type
poltrona lounge+poggiapiedi
lounge chair+footrest
Loungesessel+Fußstütze
fauteuil lounge+tabouret

code
2007+2008

Tessuto/Fabric
B Flora 2 646



Catifa 80
Lievore, Altherr, Molina

type
poltrona
chair
Stuhl
chaise

code
2009
Tessuto/Fabric
B Flora 2 446

Eolo
Lievore, Altherr, Molina

type
tavolo
table
Tisch
table

code
0789
Mdf
M02
V12

Catifa 80
Lievore, Altherr, Molina

type
poltrona
chair
Stuhl
chaise

code
2009

Tessuto/Fabric
B Flora 2 446



Catifa 70 è realizzata con una scocca imbottita con rivestimento in tessuto o pelle, sostenuta da una struttura girevole in alluminio lucido o da un fusto a slitta. Può inoltre essere completata con un poggiatesta coordinato. Catifa 80 si differenzia per la seduta più larga e per lo schienale ribassato. La struttura può essere centrale in alluminio oppure a slitta in acciaio.

Catifa 70 comes with a padded shell covered in fabric or leather, supported by a swivel structure in polished aluminium or by a sled base. A matching footstool is also available. Catifa 80 differs from the Catifa 70 model in its wider seat and low back. It comes with a central aluminium structure or steel sled structure.

Catifa 70 gibt es mit gepolsterter Sitzschale mit Stoff- oder Lederbezug, die auf einem drehbaren Zentralfuß aus poliertem Aluminium oder auf einem Kufengestell ruht. Dazu ist eine passende Fußstütze lieferbar. Catifa 80 unterscheidet sich durch die größere Sitzbreite und die niedrige Rückenlehne. Das Gestell gibt es als Zentralfuß in Aluminium oder als Kufengestell in Stahl.

Catifa 70 réalisée avec une coque recouverte en tissu ou en cuir avec une structure pivotante en aluminium poli ou piétement luge. Possibilité de compléter la collection avec un repose-pieds coordonné. Catifa 80 présente une assise plus large et un dossier baissé. La structure peut être centrale en aluminium ou en luge en acier.



**misure/dimensions
imbottita/upholstered
fusto/structure**

76 x 76 x h 106
code 2011
acciaio/steel

50 x 75 x 40,5
code 2012
acciaio/steel

87 x 87 x h 109
code 2007
alluminio/aluminium

78 x 78 x h 42
code 2008
alluminio/aluminium



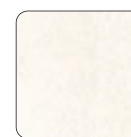
**misure/dimensions
imbottita/upholstered
fusto/structure**

84 x 70 x h 71,5
code 2010
acciaio/steel

87 x 87 x h 68
code 2009
alluminio/aluminium

Catifa 70/80 materials

Ecopelle Faux leather



EP001



EP002



EP003



EP004



EP005



EP006



EP007



EP008

Pelle fiore Soft leather



PF006



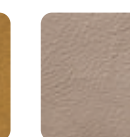
PF007



PF005



PF004



PF003



PF002

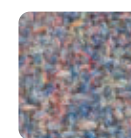


PF001

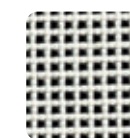
Tessuto Fabric



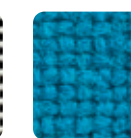
**Tessuto A
Orange**
OR191
36 types



**Tessuto B
Flora**
FL717
33 types



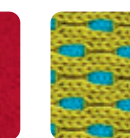
**Tessuto B
Pro**
P2123
35 types



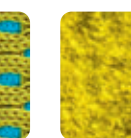
**Tessuto C
Hallingdal**
HA850
62 types



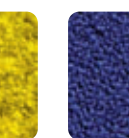
**Tessuto C
Divina**
DV623
31 types



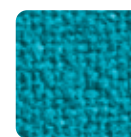
**Tessuto C
Action
Fabric 96**
AF003
9 types



**Tessuto C
Divina
Melange**
DM421
24 types



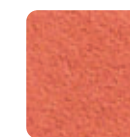
**Tessuto C
Topas**
TO756
67 types



**Tessuto C
Tonus**
T3625
64 types



**Tessuto C
Sinclair**
SI036
33 types



**Tessuto D
Glove**
G2530
20 types